



West Coast Rock Lobster

Harvest Strategy and Control Rules

DISCUSSION PAPER

Graeme Baudains



Government of **Western Australia**
Department of **Fisheries**

Fish for the future

Presentation format

- Background to HSCR
- Intro to paper and sustainability objective
- Key principles
- Harvest objective
- Biological controls, pots, life of document
- Process for implementation
- How to make a submission
- Break between sections to ask questions



What is the harvest strategy & control rules ?

- Harvest strategy - i.e. objectives and what level of catch should taken.
- Decision rules for TACC setting.
- Previous Harvest Strategy Docs
 - Bray (2004)
 - 2010
 - 2012



Why?

- Internationally regarded “best practice”.
- Condition of MSC certification (March 2014).
- Commonwealth requesting as part of WTO approval
- DoF Harvest Strategy Policy– tied to MSC certification.
- Update for an output controlled management system (quota setting).
- Certainty around future TACC setting process – consistent process between years.
- Open/transparent and consistent.

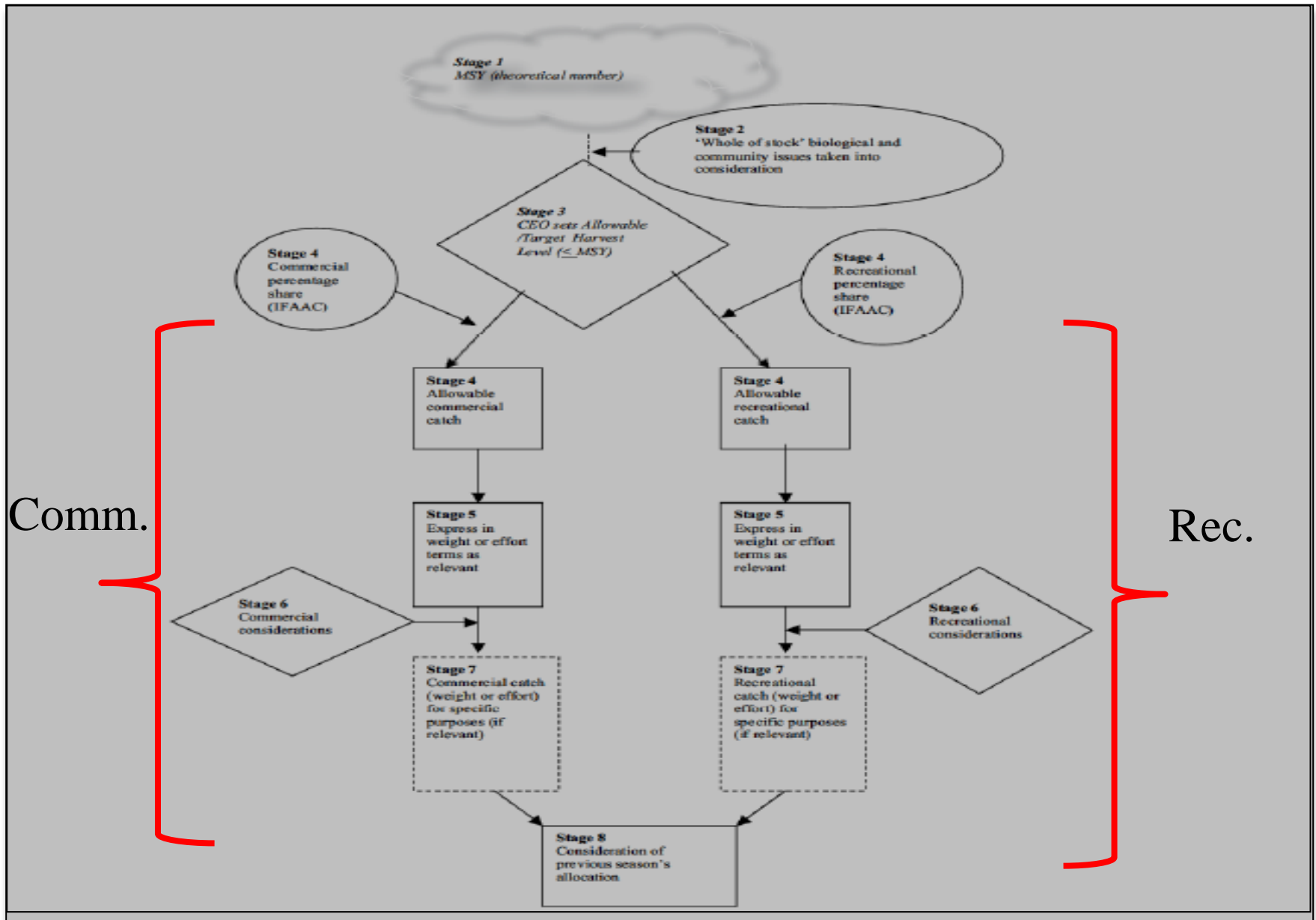


Process so far

- Drafted FMP 254 (Harvest Strategy Paper).
- Consultation in March 2012 in conjunction with elements of the then new Management Plan. Not wholly accepted by industry.
- Was used as basis for 2013 and 2014 TACC setting process.
- Early 2013 Industry Reference Group formed (Fishers, DoF and WRLC) .
- Role to assist the drafting of the discussion paper to help ensure that main issues are discussed.

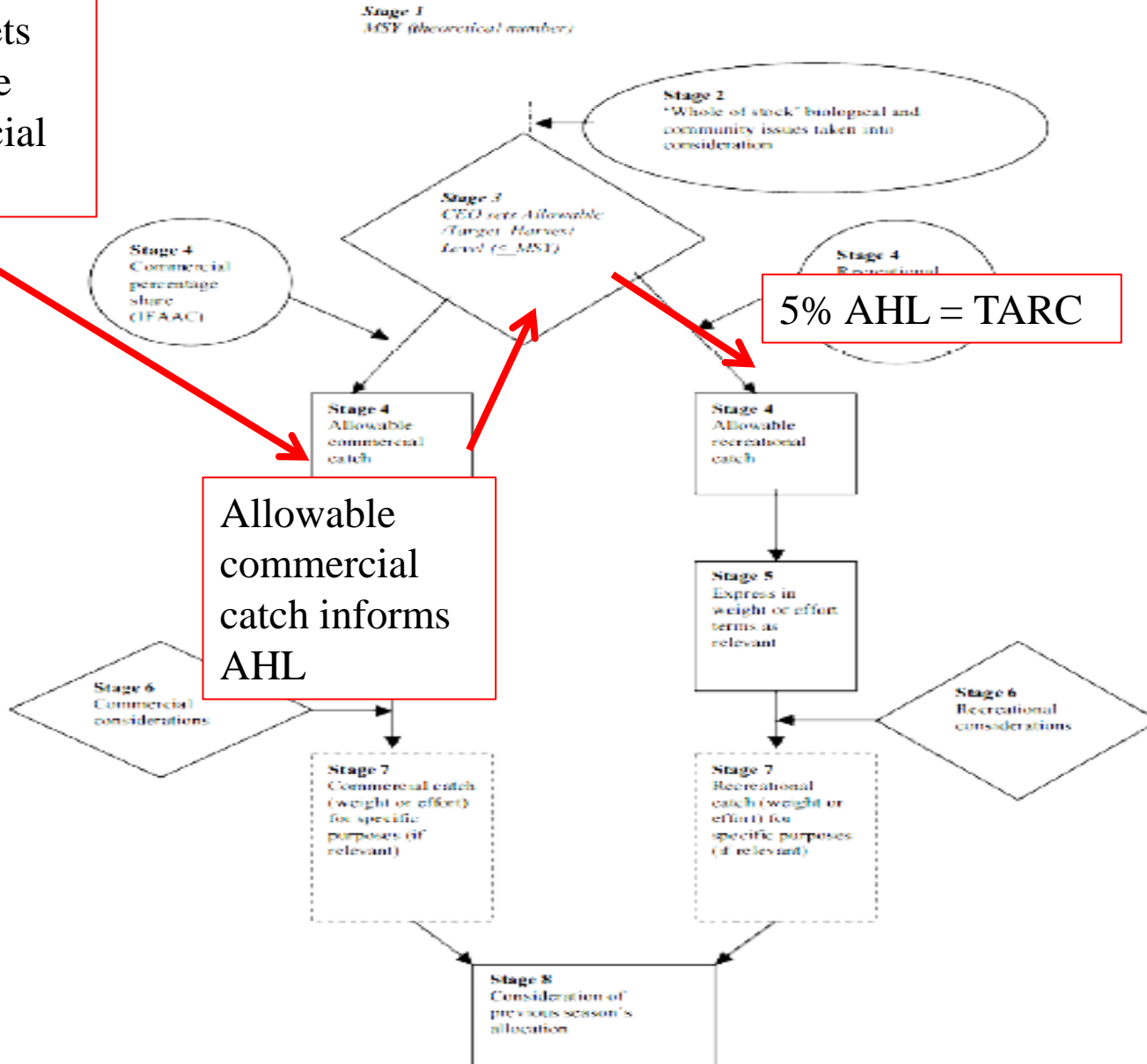


Setting a TAC for the resource - theory



Setting a TAC for the resource - HSCR

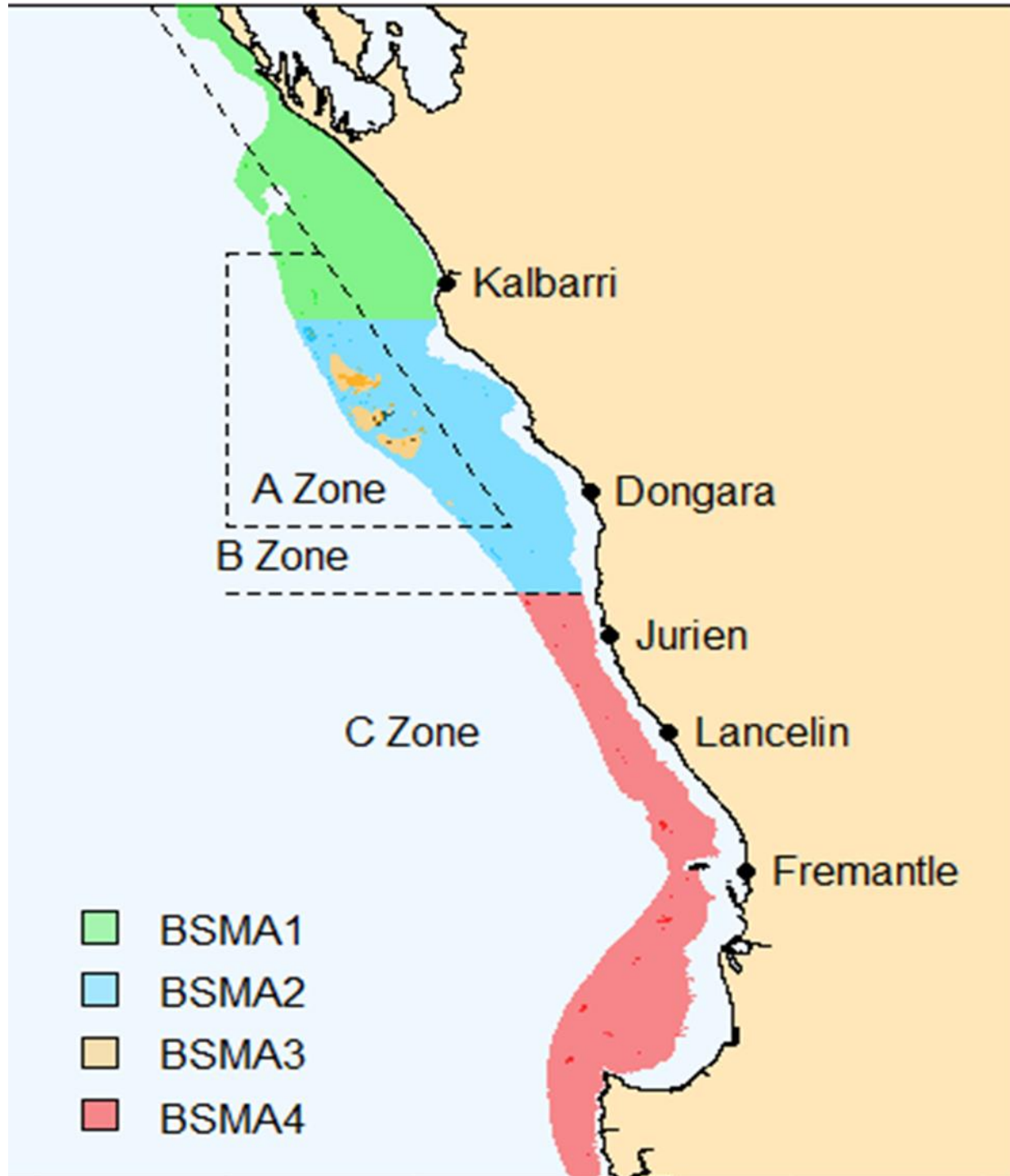
HSCR sets allowable commercial catch



Sustainability objective

“To ensure that the egg production in Breeding Stock Management Areas of the fishery remains above its threshold value for the next five years with a probability greater than 75%”





Threshold reference years

	Description	Threshold reference years	
BSMA 1	Deep water areas north of 28°S	Preliminary estimate only mid-1990s, but will be revised as more years of survey data become available	1994-1996
BSMA 2	Deep water areas between 28° and 30°S	Mid-1980s	1984-1986
BSMA 3	Shallow Abrolhos Islands areas	Mid-1980s	1984-1986
BSMA 4	Deep water areas south of 30°S	Mid-1980s	1984-1986

* **BSMA 1 Preliminary Estimate** - Department recommends that in the event the Big Bank area of the fishery is reopened, the abundance of lobsters in that area not contribute to the TACC setting for Zone B.



Questions?



Government of **Western Australia**
Department of **Fisheries**

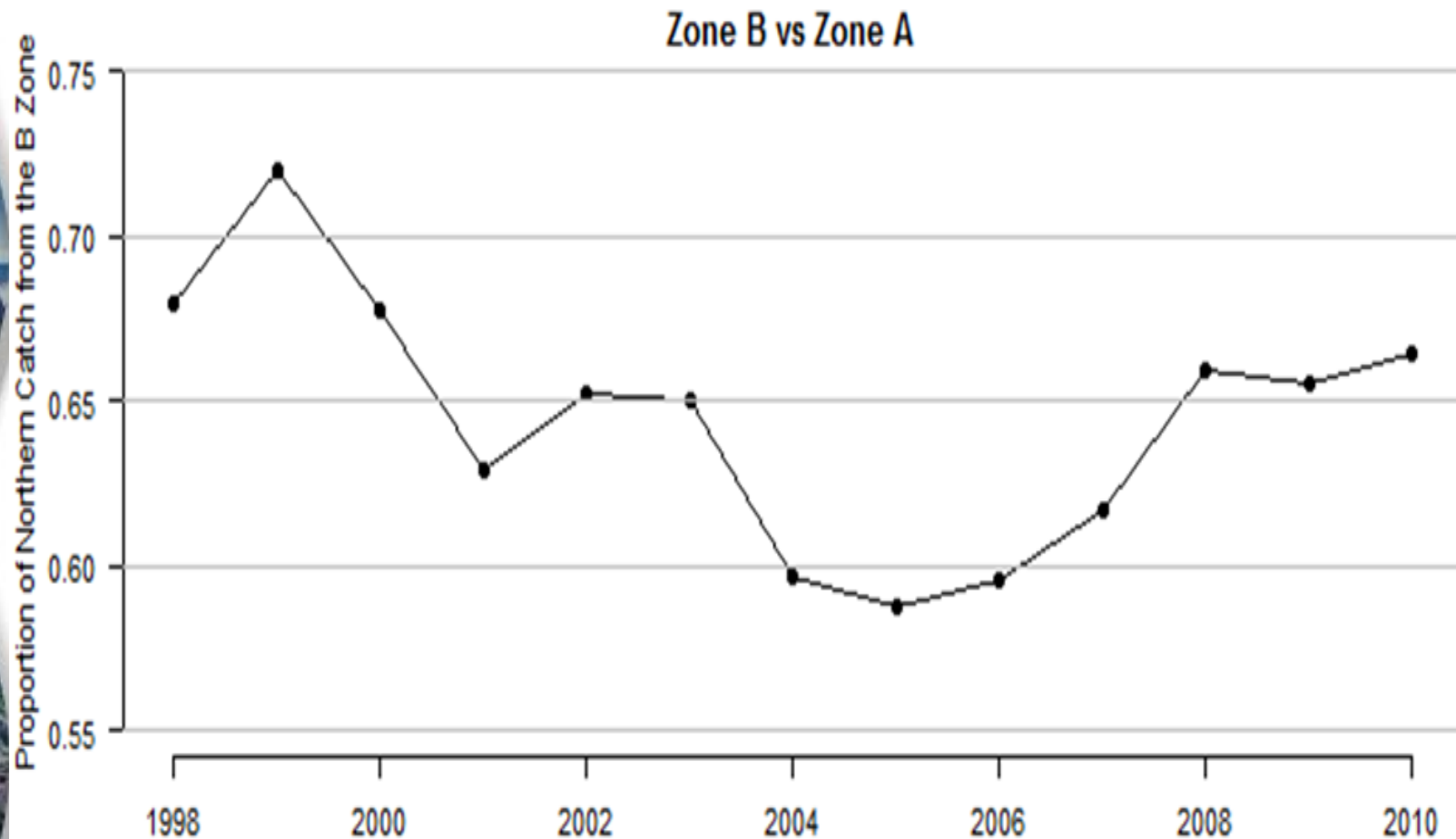
Fish for the future

Key principles

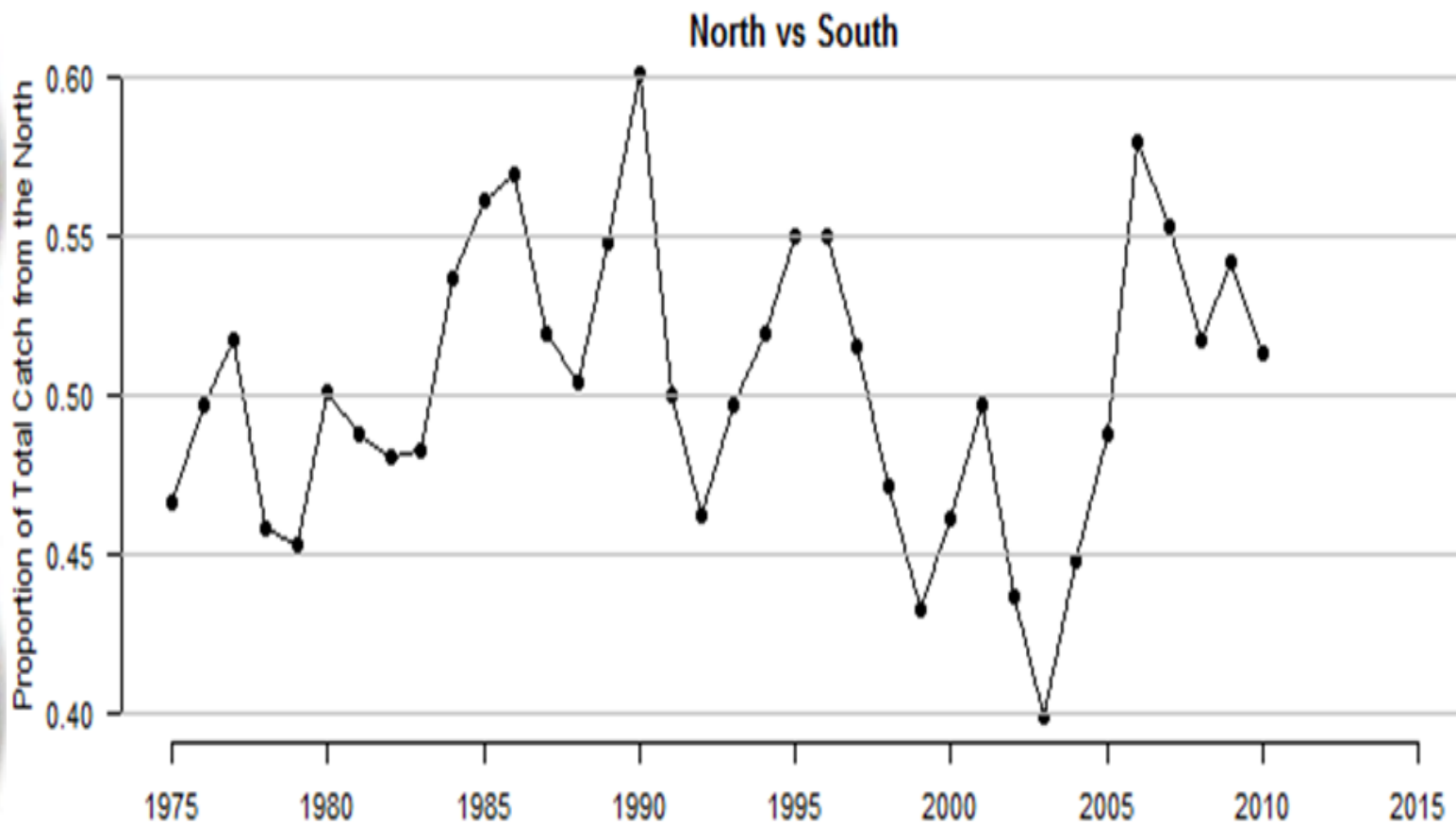
- Fix TACC to build abundance
- Fix proportions between Zones A and B
- Fix proportions between north and south
- Allocation of quota to WRLC



Proportion of northern catch taken in Zone B



Proportion of overall catch taken by Zone C



Allocation of quota to WRLC

- Governance and conflict of interest:
 - Consultation to implement. Who?
 - Annual quota setting. WRLC benefit?
- How much should be allocated?



Questions?



Government of **Western Australia**
Department of **Fisheries**

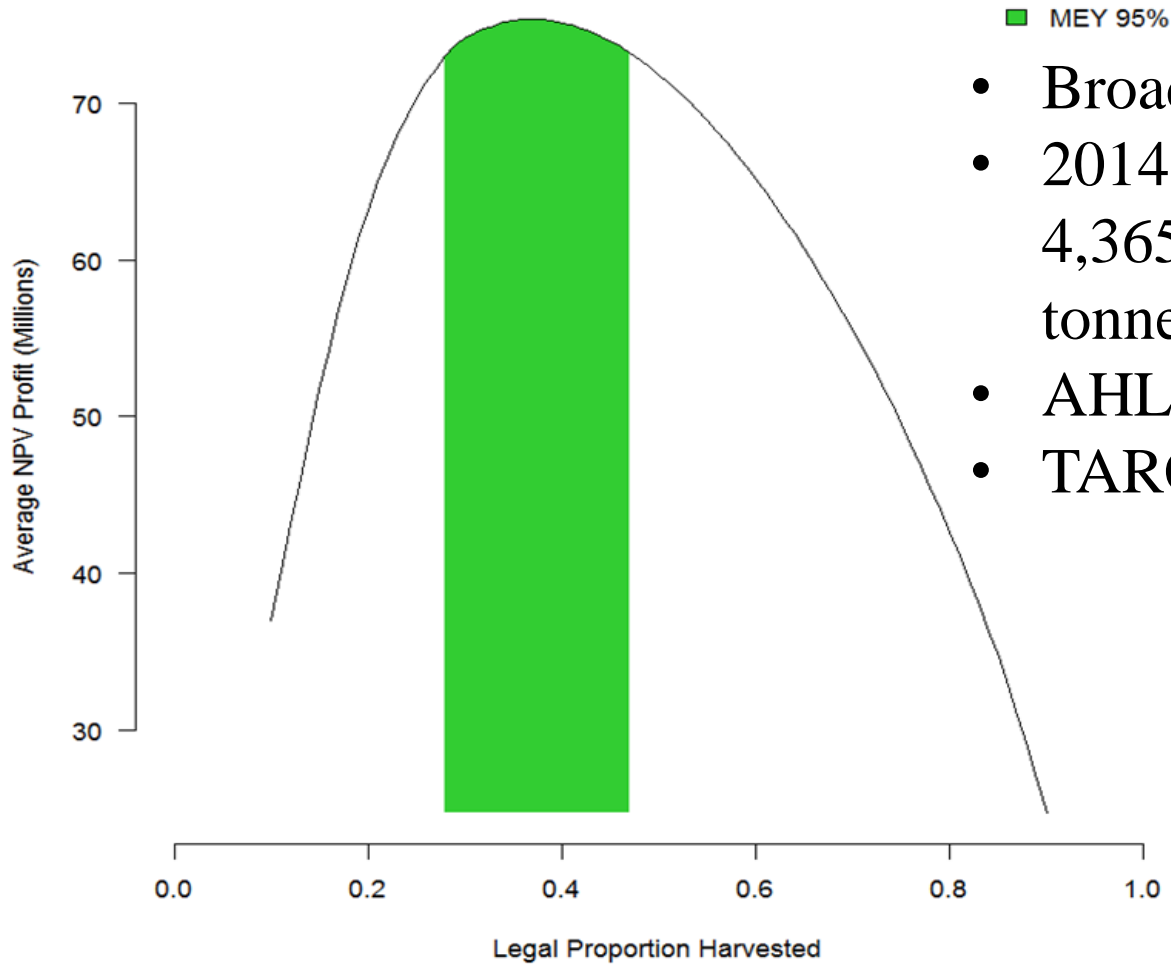
Fish for the future

Proposed harvest objective

Once the Sustainability Objective has been satisfied TACCs set for the fishery should use Maximum Economic Yield to determine an optimal range of legal proportion harvested that would optimise the economic value of the fishery by increasing stock abundance and catch rates and thereby providing high economic returns and greater amenity to the fishery and the WA community.



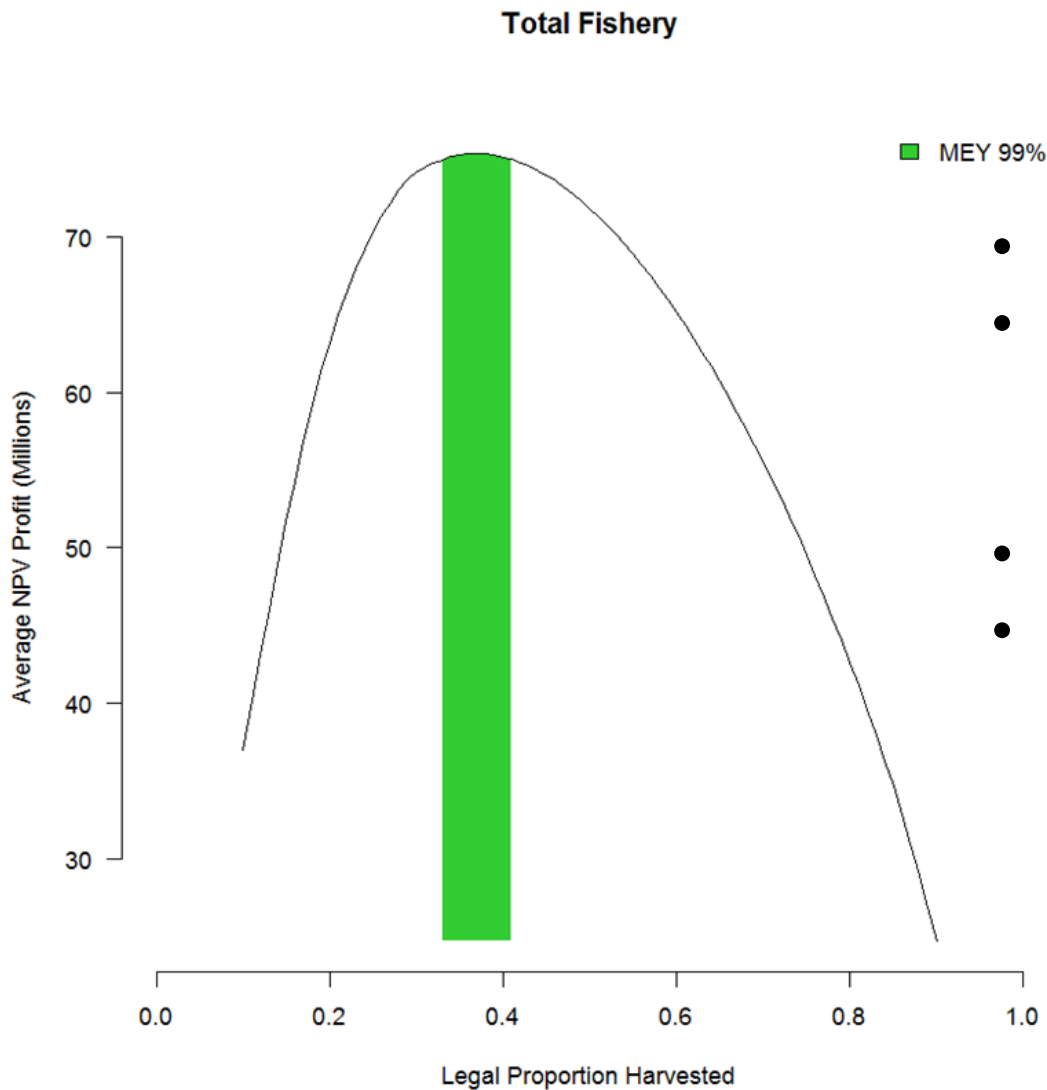
Total Fishery



- Broad LPH range
- 2014 TACC from 4,365 to 7,370 tonnes
- AHL = 7,758 tonnes
- TARC = 388 tonnes



MEY - narrow



- Narrow LPH range
- 2014 TACC from 5,152 to 6,417 tonnes
- AHL = 6,755 tonnes
- TARC = 338 tonnes



Questions?



Government of **Western Australia**
Department of **Fisheries**

Fish for the future

Varying biological controls

- maximum female size
- setose lobsters
- maximum female size and setose
- maximum female size and setose and decreasing the minimum size from 77mm to 76mm



Pots

- unlimited pots, reverting to current usage during the whale migration period;
- all fishers permitted a minimum pots then 0.05 pots per unit extra, once a certain number of units are held;
- limit of 0.05 pots for **all units** on the licence (i.e. combined A, B and C); or
- limit of 0.05 (or another ratio) pots for the **units in the zone** that is being fished.



Life of harvest strategy and review period

- 5 Year HSCR - general principles and processes around TACC setting do not need to be debated each year
- Review if circumstances change



Questions?



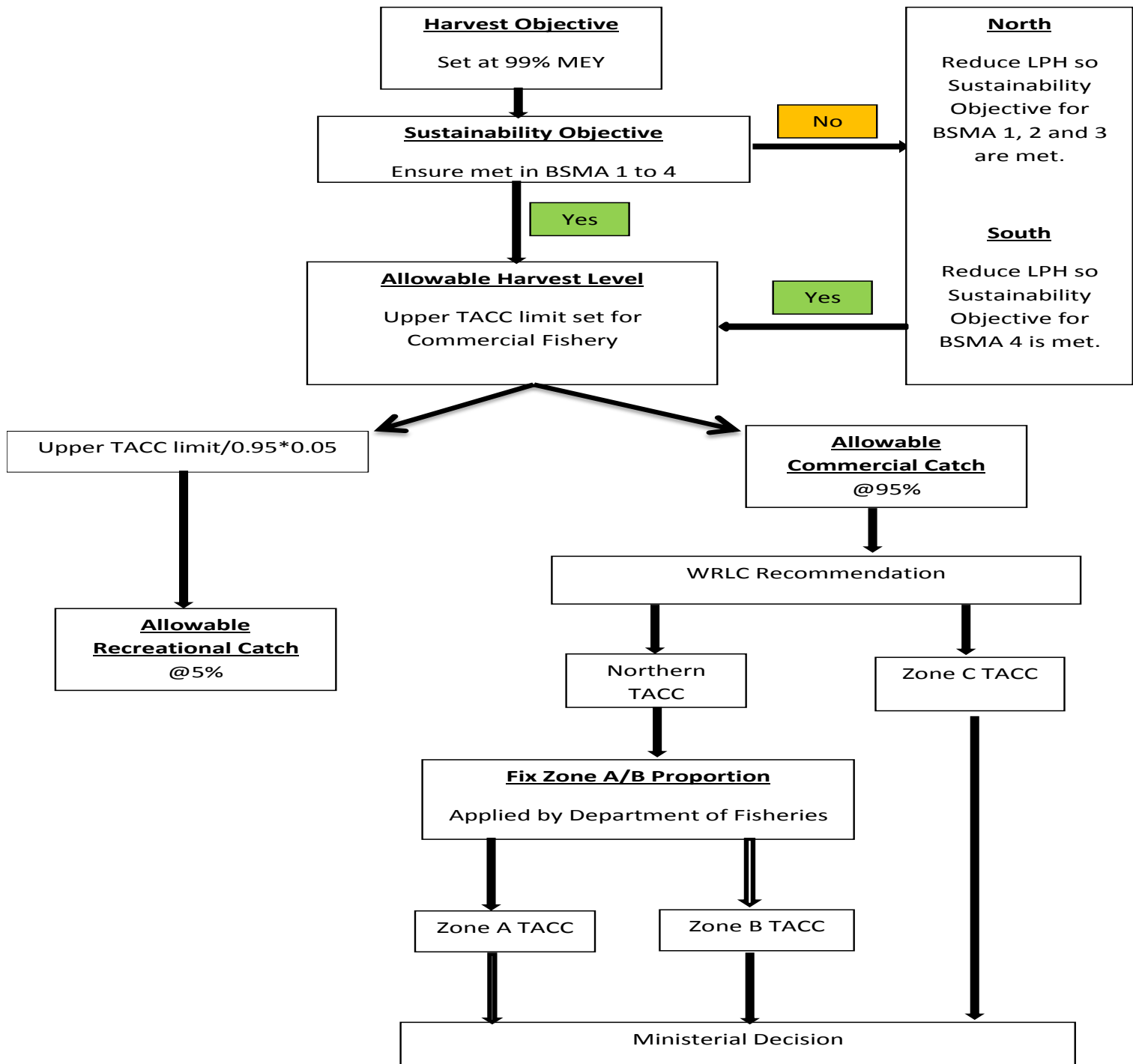
Government of **Western Australia**
Department of **Fisheries**

Fish for the future

Where to from here?

- Consultation meetings – February
- submissions
- DoF collate submissions – provide to WRLC & RFW
- DoF draft final HSCR - provide to WRLC & RFW (March)
- Final recommendation to Minister (late April)
- Approved HSCR to set 2015 TACCs - June





Submissions- what we are looking for.....

- Do you agree with adopting a harvest objective?
- Do you agree with using MEY to determine the optimal TACC range for the Fishery?
- Do you agree that the abundance of lobsters in the Big Bank area not be included in the TACC setting arrangements should the Big Bank area be reopened?
- Should the MEY range be determined by MEY 95% or MEY 99%?
- Should any of the biological controls be removed? If so which ones?
- Should the TACC be fixed for a period of time?
- Should the proportions of catch between zones A and B be fixed?
- Should the proportions of catch between zones A/B and Zone C be fixed?
- Should the WRLC be allocated some amount of quota? If so how much?
- Should the life of the HSDR be 5 years with the possibility of review should the need arise?



How to make a submission

Monday 17th March

Director General

Department of Fisheries

Locked Bag 39, Cloisters Square

WA 6850

or:

lobster.submissions@fish.wa.gov.au



Government of Western Australia
Department of Fisheries

Fish for the future

Questions?



Government of **Western Australia**
Department of **Fisheries**

Fish for the future