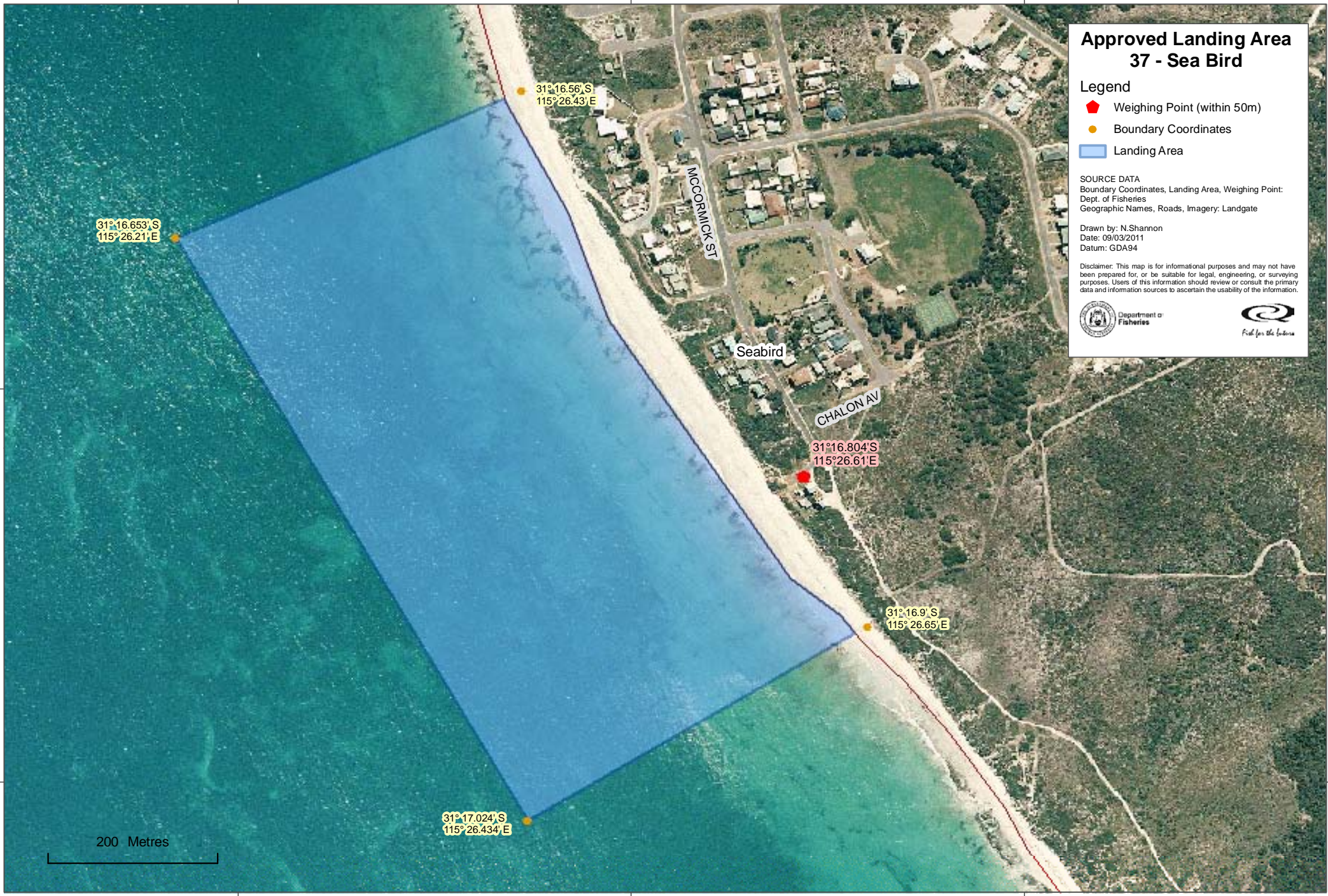


115°26'15"E

115°26'30"E

115°26'45"E



Approved Landing Area 37 - Sea Bird

Legend

- ⬠ Weighing Point (within 50m)
- Boundary Coordinates
- Landing Area

SOURCE DATA
 Boundary Coordinates, Landing Area, Weighing Point:
 Dept. of Fisheries
 Geographic Names, Roads, Imagery: Landgate

Drawn by: N.Shannon
 Date: 09/03/2011
 Datum: GDA94

Disclaimer: This map is for informational purposes and may not have been prepared for, or be suitable for, legal, engineering, or surveying purposes. Users of this information should review or consult the primary data and information sources to ascertain the usability of the information.



31°16.653'S
115°26.21'E

31°16.56'S
115°26.43'E

31°16.804'S
115°26.61'E

31°16.9'S
115°26.65'E

31°17.024'S
115°26.434'E

200 Metres

115°26'15"E

115°26'30"E

115°26'45"E

31°16'45"S

31°17'0"S

31°16'45"S

31°17'0"S