

114°57'40"E

114°58'0"E

114°58'20"E

29°38'40"S

29°38'40"S

29°39'0"S

29°39'0"S

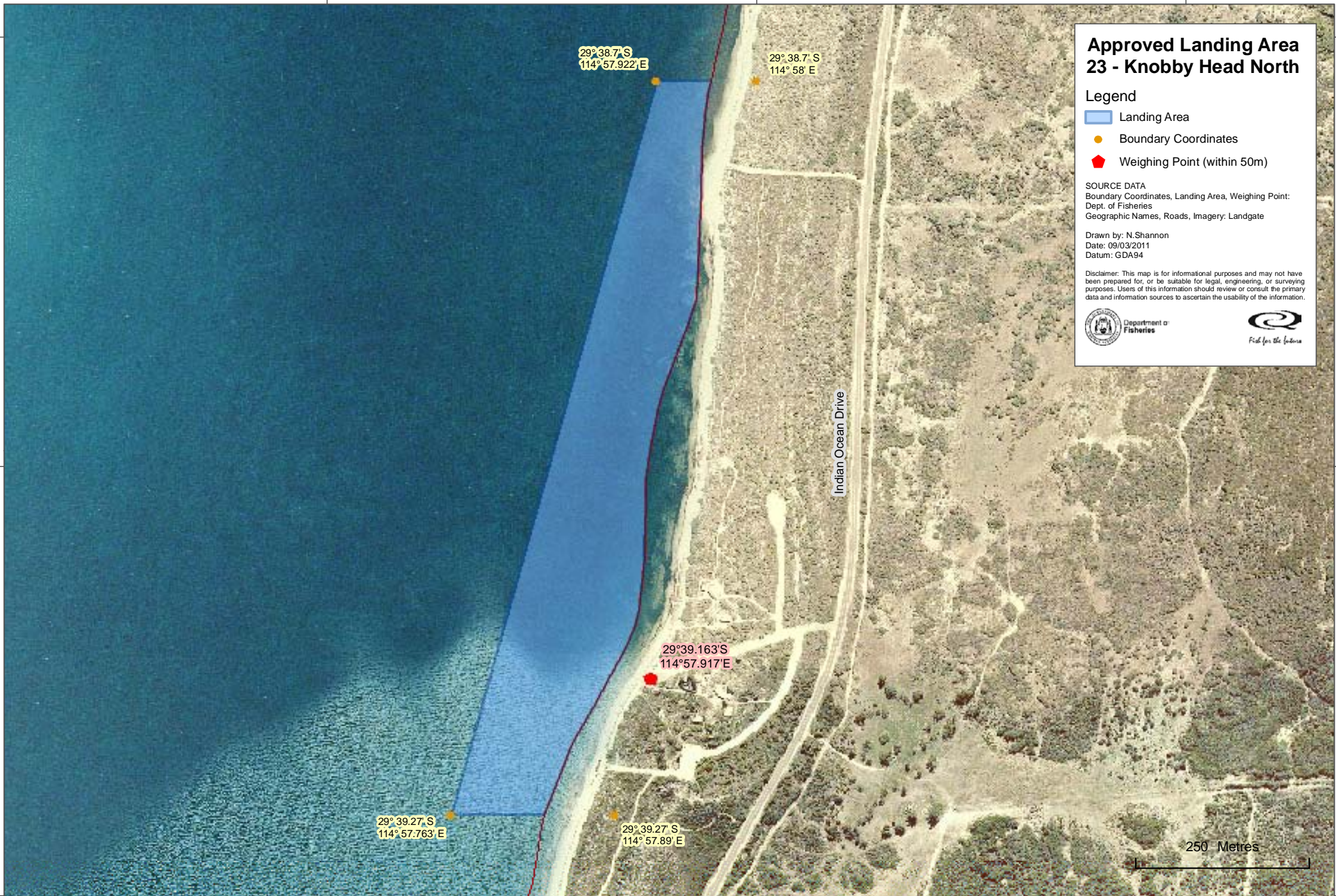
29°39'20"S

29°39'20"S

114°57'40"E

114°58'0"E

114°58'20"E



29°38.7'S
114°57.922'E

29°38.7' S
114° 58' E

29°39.163'S
114°57.917'E

29°39.27'S
114°57.763'E

29°39.27' S
114° 57.89' E

Approved Landing Area 23 - Knobby Head North

Legend

- Landing Area
- Boundary Coordinates
- Weighing Point (within 50m)

SOURCE DATA
 Boundary Coordinates, Landing Area, Weighing Point:
 Dept. of Fisheries
 Geographic Names, Roads, Imagery, Landgate

Drawn by: N.Shannon
 Date: 09/03/2011
 Datum: GDA94

Disclaimer: This map is for informational purposes and may not have been prepared for, or be suitable for legal, engineering, or surveying purposes. Users of this information should review or consult the primary data and information sources to ascertain the usability of the information.



Department of Fisheries



Fish for the future

Indian Ocean Drive

250 Metres