

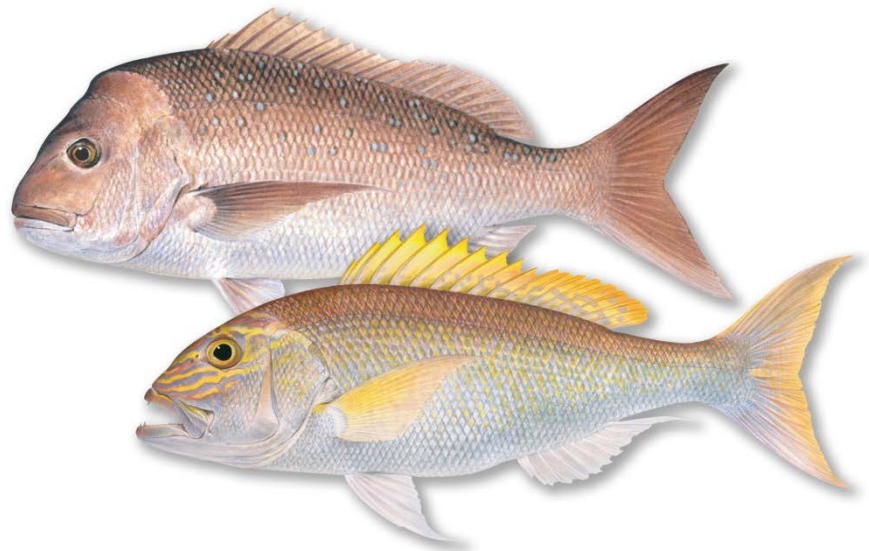
Gascoyne Demersal Scalefish Managed Fishery

An operators' guide to the
management arrangements
1 September 2015 – 31 August 2016

Version 5.0 (February 2016)



Government of **Western Australia**
Department of **Fisheries**



Illustrations © R.Swainston/www.anima.net.au

Aquatic Management Division

Department of Fisheries Western Australia

3rd Floor, The Atrium, 168 St Georges Terrace, Perth WA 6000

Disclaimer

Important Note: Every effort has been made to ensure that the information contained in this document is correct and accurate at the time of printing. However the information provided is intended to serve as a plain English guide only, and therefore the Department of Fisheries shall in no way be liable for any loss caused, whether due to negligence or otherwise, arising from the use of or reliance upon this document.

The document is not intended to replace the requirement for operators to make themselves aware of the legislation in the *Gascoyne Demersal Scalefish Managed Fishery Management Plan 2010*; *Fish Resources Management Act 1994* (the Act); *Fish Resources Management Regulations 1995* and relevant licence conditions, management plans, notices, orders and determinations issued under the Act.

The web addresses for this legislation can be found on page 20 or can be accessed on the Department's website via the legislation link at www.fish.wa.gov.au

Department of Fisheries
3rd floor, The Atrium
168 – 170 St Georges Terrace
PERTH WA 6000
Telephone: (08) 9482 7333
Facsimile: (08) 9482 7389
Website: www.fish.wa.gov.au
ABN: 55 689 794 771

© Department of Fisheries, Western Australia. February 2016
ISSN: 1447 – 2058 (Print) ISBN: 978-1-877098-20-8 (Print)
ISSN: 2206 – 0928 (Online) ISBN: 978-1-877098-21-5 (Online)

Table of Contents

1	Introduction.....	1
1.1	A guide for the Gascoyne Demersal Scalefish Managed Fishery.....	1
1.2	Feedback wanted.....	1
2	About the Gascoyne Demersal Scalefish Managed Fishery	2
2.1	The GDSF Management Plan	2
2.2	What new management arrangements apply for 2015/16?.....	2
2.3	Boundaries of the Gascoyne Demersal Scalefish Fishery	2
3	Gascoyne Demersal Scalefish Fishery Fishing Rules.....	4
3.1	What do I need to fish in the GDSF?.....	4
3.2	Where can't I fish?.....	4
3.2.1	Closed Waters: Inside Bernier and Dorre Islands	5
3.2.2	Closed Waters: Shark Bay Beach Seine and Mesh Net Managed Fishery	6
3.2.3	Closed Waters: Point Quobba Fish Habitat Protection Area	7
3.2.4	Closed Waters: Commonwealth Waters of the Ningaloo Marine Park	8
3.2.5	Closed Waters: Shark Bay and Ningaloo Marine Park Sanctuary Zones and Recreation Zones.....	8
3.2.6	Closed Waters: Denham, Carnarvon and Coral Bay Port Areas.....	8
3.2.7	Closed Waters Adjacent to GDSF: Point Maud to Tantabiddi Well Commercial Fishing Closure.....	8
3.2.8	Closed Waters Adjacent to GDSF: South of 26° 30.00' South Latitude	8
3.3	Season dates	9
3.4	Capacity and Unit Value 2015/2016 licencing period.....	9
3.5	How much pink snapper and/or non-pink snapper demersal scalefish quota do I hold?	9
3.6	Minimum debit rule for pink snapper	10
3.7	How many days can I fish?.....	10
3.8	What do I do if I accidentally go over quota?.....	10
3.9	Landing Fish	10
3.9.1	Where can I land fish?	10
3.9.2	Requirements when leaving the GDSF.....	10
3.9.3	What fish can't I land?	11
3.9.4	What fishing gear can I use in the GDSF?.....	11
3.9.5	No transfer of fish at sea	11

3.9.6	Filleting at sea	11
3.10	What forms do I have to fill in and submit?	11
3.10.1	Catch and Disposal Record.....	11
3.10.2	GDSF Daily/Trip Logbook.....	12
3.11	Size limits.....	12
3.12	No recreational fishing from a commercial vessel	12
3.13	Prohibition on the use of bait bands.....	12
3.14	Can I have friends/visitors come commercial fishing with me?.....	13
3.15	Commercial vessel survey, moorings and berthing in the GDSF.....	13
3.16	Dirk Hartog, Bernier and Dorre Islands.....	13
3.17	What should I do if I suspect someone of fishing illegally?.....	13
4	Vessel Monitoring System (VMS).....	15
4.1	Nomination	15
5	Prohibited/Protected Species	17
6	Bycatch Limits.....	18
Attachment 1	GDSF Contact Details (as at November 2015)	19
Attachment 2	GDSF Internet links for relevant documents.....	20

1 Introduction

This guide summarises the management arrangements for the 2015/16 Gascoyne Demersal Scalefish Managed Fishery (GDSF) season.

This booklet is intended as a guide only. The complete requirements for operators in the GDSF are detailed in several key documents. It is the responsibility of the licence holder and the Master of the vessel to access and interpret this legislation.

The relevant legislation includes:

- *Fish Resources Management Act 1994* (the Act);
- *Fish Resources Management Regulations 1995* (the Regulations);
- *Gascoyne Demersal Scalefish Managed Fishery Management Plan 2010* (the Plan);
- Gascoyne Demersal Scalefish Managed Fishery Licence and any conditions imposed on that Licence;
- Gascoyne Demersal Scalefish Managed Fishery Approved Directions for Use;
- Gascoyne Demersal Scalefish Managed Fishery Catch and Disposal Record;
- Gascoyne Demersal Scalefish Managed Fishery Daily/Trip Logbook; and
- Commonwealth and WA legislation on prohibited and protected species and bycatch limits for Commonwealth managed species.

Western Australian legislation can be accessed through the Department of Fisheries website at www.fish.wa.gov.au.

1.1 A guide for the Gascoyne Demersal Scalefish Managed Fishery

This guide is a simple “plain English” explanation of how the legislation associated with the fishery works and may not be comprehensive. We hope that you find the guide to be a useful source of information about how the GDSF management arrangements work and it results in an improved understanding of the rules for operators.

If there is anything that you don’t understand in this guide, please contact the Regional Fisheries Management Officer for the Gascoyne on (08) 9482 7313 or the Carnarvon Fisheries Office on (08) 9941 1185.

1.2 Feedback wanted

The Department of Fisheries is interested in comments from users of this guide in regard to its content. Please email any feedback to: Hannah.Zilles@fish.wa.gov.au

2 About the Gascoyne Demersal Scalefish Managed Fishery

2.1 The GDSF Management Plan

The *Gascoyne Demersal Scalefish Managed Fishery Management Plan 2010* is an important document in managing the GDSF. A consolidated copy of the current management plan is available by clicking on the legislation link of the Department's website at www.fish.wa.gov.au and then following the prompts.

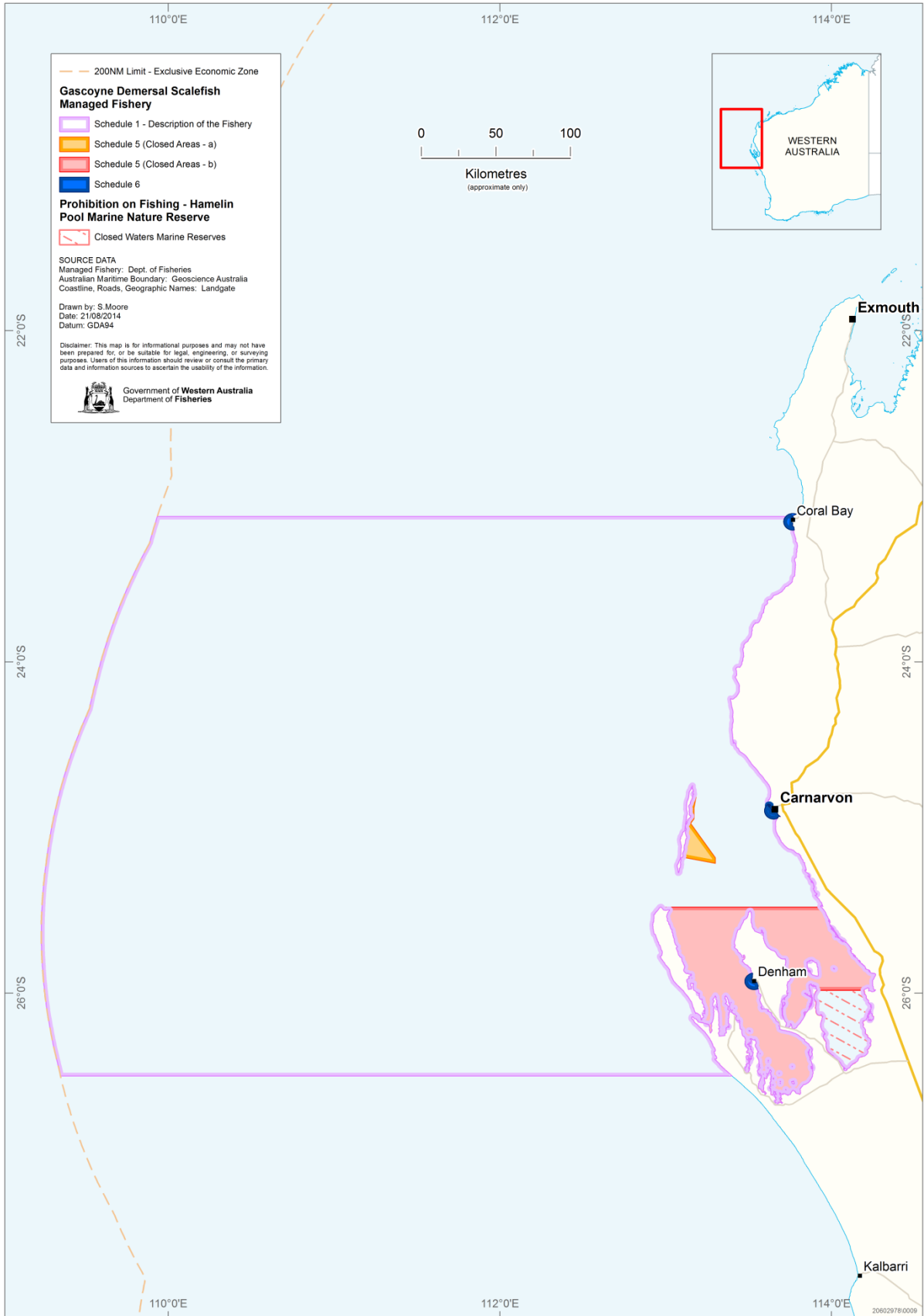
2.2 What new management arrangements apply for 2015/16?

1. All non-pink snapper demersal scalefish are now managed via an Individual Transferrable Quota system (quota). This means that there are two types of quota in the GDSF, Class A (pink snapper) units, and Class B (demersal scalefish) units (see section 3.5). There is no longer a licence condition restricting the total number of days you are permitted to fish.
2. The capacity (or Total Allowable Commercial Catch – TACC) of the GDSF for the 2015/2016 licensing period is 277,668 kilograms of pink snapper (whole weight); and 227,726 kilograms of demersal scalefish (whole weight) (see section 3.4).
3. Licence holders will have an option to pay the renewal of a licence fee by three instalments (similar to other fisheries) from the 2016/17 licensing period.
4. When nominating to fish, you must now nominate the MFL that you will be fishing under. If you wish to fish under a new MFL whilst at sea, a subsequent at sea nomination can be made to specify the new MFL (see section 4.1).
5. Minimum debit rule for pink snapper now applies (see section 3.6).
6. No filleting at sea. All pink snapper and demersal scalefish must be landed whole or gilled and/or gutted form (see section 3.9.6).

2.3 Boundaries of the Gascoyne Demersal Scalefish Fishery

The boundaries of the GDSF are from 26° 30.00' south latitude to 23° 07.30' south latitude and offshore to 200 nautical miles (see next page).

The waters to the south of the GDSF are part of the West Coast Demersal Scalefish (Interim) Managed Fishery and are managed separately. The waters north of the GDSF from 23° 07.30' south latitude to 21° 56.30' south latitude are part of the Point Maud to Tantabiddi Well commercial fishing closure, where all State-managed commercial fishing is prohibited.



3 Gascoyne Demersal Scalefish Fishery Fishing Rules

3.1 What do I need to fish in the GDSF?

To commercially fish in the GDSF you will need to ensure:

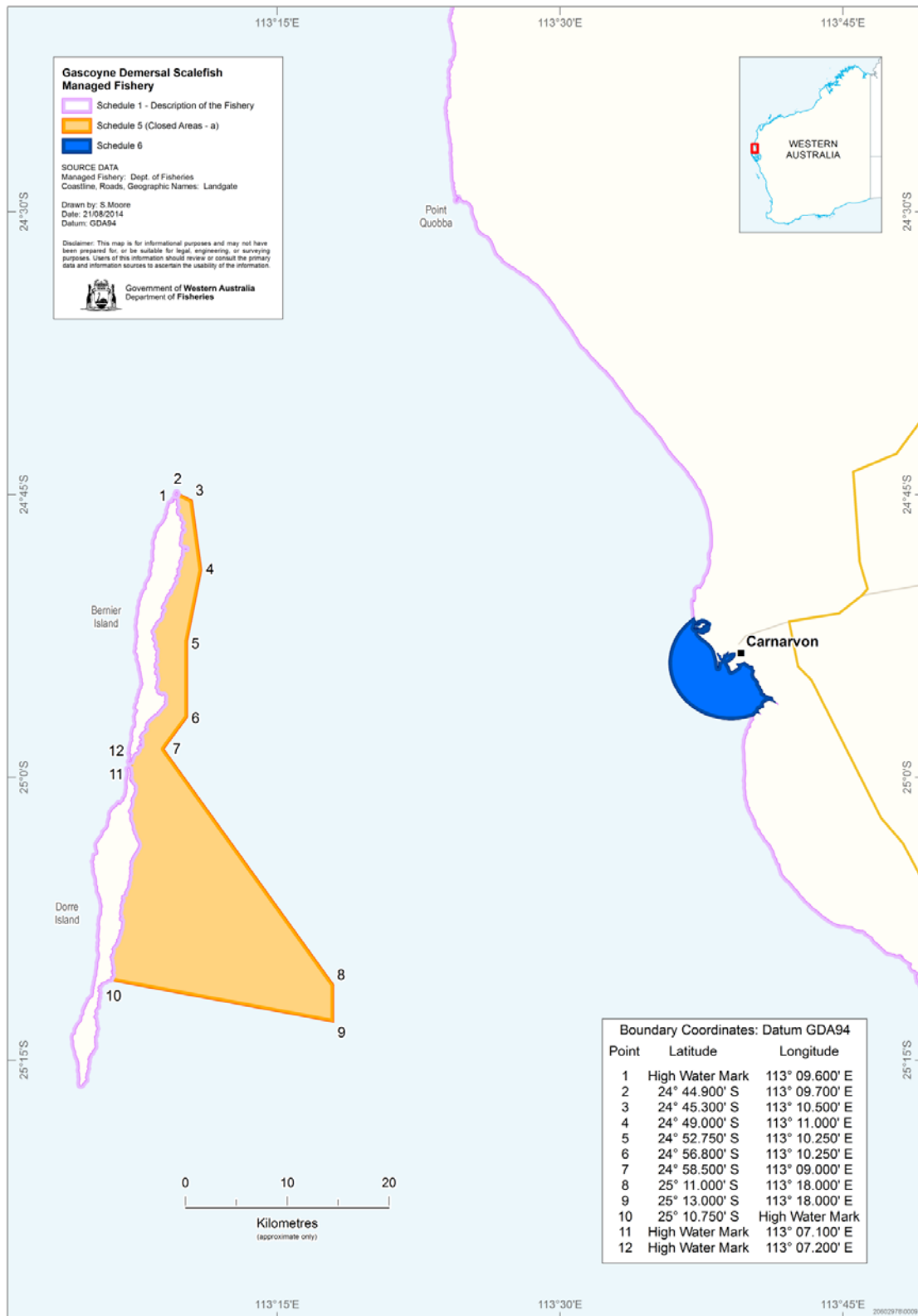
- The vessel being used is listed as the authorised boat on a GDSF Managed Fishery Licence with a minimum of 100 units of both Class A (pink snapper) and Class B (demersal scalefish) entitlement unless otherwise specified in the GDSF management plan (for example, if the vessel is also endorsed on a Shark Bay Prawn or Shark Bay Scallop Licence where it may fish with less than 100 units).
- The GDSF Managed Fishery Licence has unexhausted pink snapper quota and demersal scalefish quota.
- Every person that works on the authorised vessel has a Commercial Fishing Licence. Commercial Fishing Licence Renewals are now available on the Department's website at www.fish.wa.gov.au.
- The vessel is an authorised vessel on a Fishing Boat Licence.
- The Master of the vessel has a GDSF Daily/Trip Logbook for recording details of the trip and catches.
- The Master of the vessel has a GDSF Catch and Disposal Record for specifically recording pink snapper and demersal scalefish catches monitored under the quota systems.
- An approved Automatic Location Communicator is installed and used in accordance with the GDSF Approved Directions.
- Copies of all licences (boat and crew) are on board the vessel at all times.

3.2 Where can't I fish?

The following four pages of this document describe the waters of the GDSF and relevant adjacent closed areas where you are not permitted to fish.

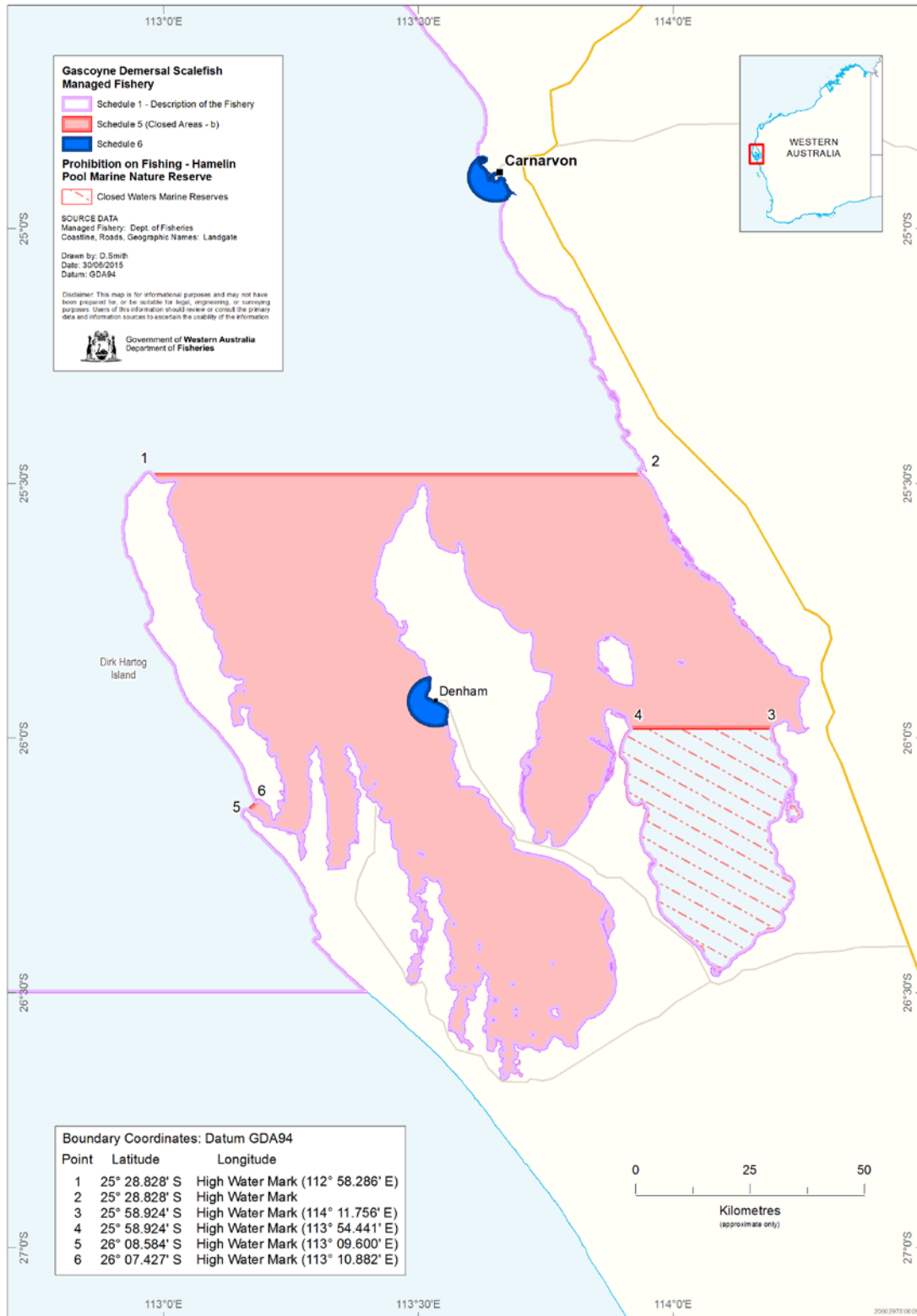
3.2.1 Closed Waters: Inside Bernier and Dorre Islands

You cannot fish in the closed area shown on the map below (Clause 34, GDSF Management Plan 2010). The coordinates for the closed waters are described in the GDSF Management Plan 2010 at Schedule 5 (a).



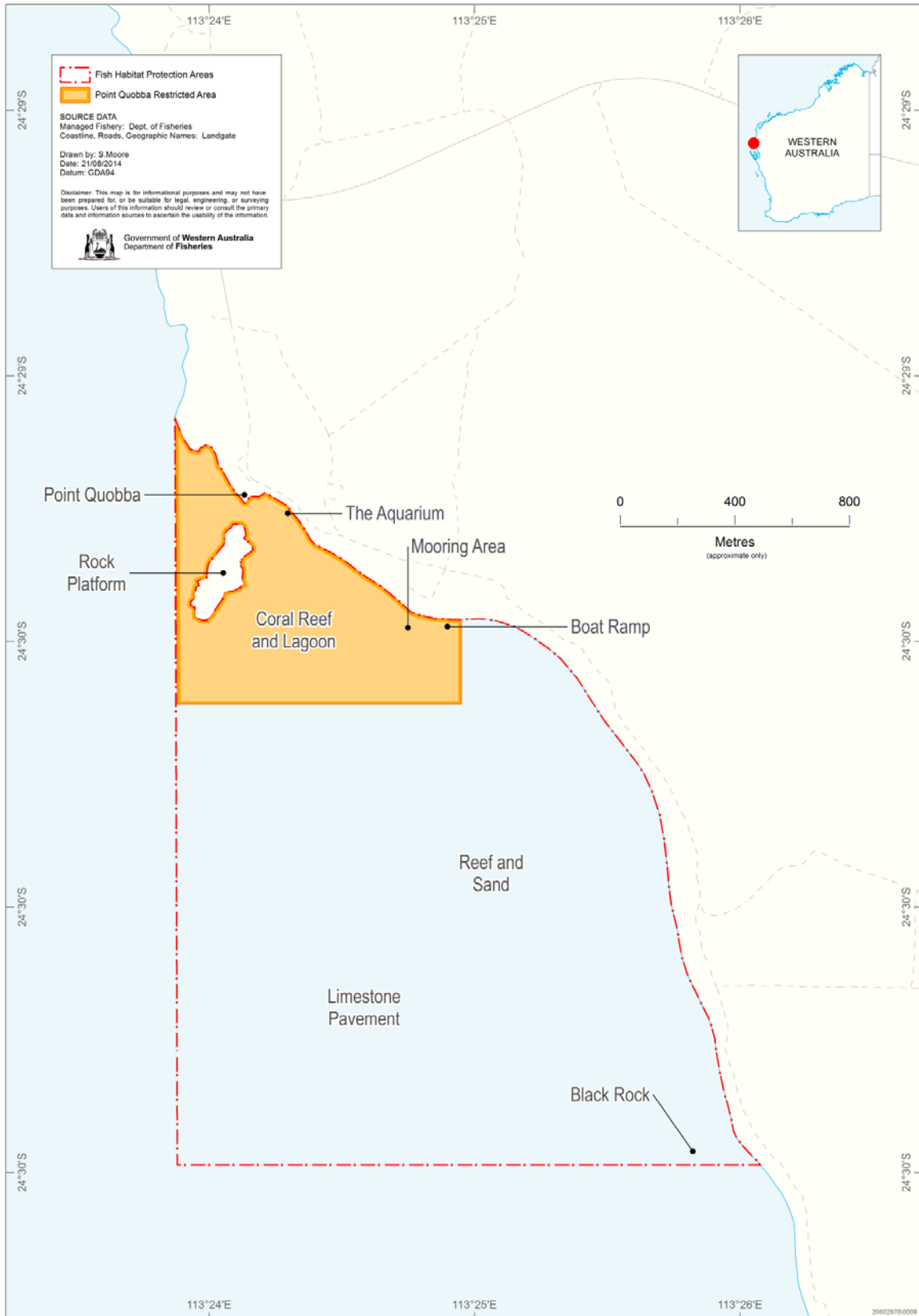
3.2.2 Closed Waters: Shark Bay Beach Seine and Mesh Net Managed Fishery

You cannot fish in the waters of the Shark Bay Beach Seine and Mesh Net Managed Fishery shown below (Clause 34, GDSF Management Plan 2010). The coordinates for the closed waters are described in the GDSF Management Plan 2010 at Schedule 5 (b).



3.2.3 Closed Waters: Point Quobba Fish Habitat Protection Area

The Point Quobba Restricted Area is closed to fishing.



3.2.4 Closed Waters: Commonwealth Waters of the Ningaloo Marine Park

You cannot fish in the Commonwealth waters of the Ningaloo Marine Park (a brochure showing this area is available at the Carnarvon or Denham Fisheries Office or the Department of Parks and Wildlife Offices, or refer to the website:

<http://www.dpaw.wa.gov.au/management/marine>).

3.2.5 Closed Waters: Shark Bay and Ningaloo Marine Park Sanctuary Zones and Recreation Zones

You cannot fish in any of the Western Australian Marine Sanctuaries in Shark Bay or the Marine Sanctuaries or Recreation Zones in the Ningaloo Marine Park (see the Carnarvon or Denham Fisheries Office or Department of Parks and Wildlife Offices for brochures with coordinates of these areas or refer to the website:

<http://www.dpaw.wa.gov.au/management/marine>).

3.2.6 Closed Waters: Denham, Carnarvon and Coral Bay Port Areas

You cannot fish inside the GDSF Port Areas described below (Clause 34 & Schedule 6, GDSF Management Plan 2010).

Denham Port Area

All the waters of the fishery within three nautical miles of the intersection of 25° 55.71' south latitude and 113° 31.99' east longitude.

Carnarvon Port Area

All the waters of the fishery within three nautical miles of the intersection of 24° 53.934' south latitude and 113° 39.071' east longitude.

Coral Bay Port Area

All the waters of the Fishery within three nautical miles of the intersection of 23° 09.288' south latitude and 113° 45.975' east longitude.

3.2.7 Closed Waters Adjacent to GDSF: Point Maud to Tantabiddi Well Commercial Fishing Closure

You cannot fish in the Point Maud to Tantabiddi Commercial Fishing Closure (from 23° 07.30' south latitude to 21° 56.30' south latitude). (See FBL Condition 16 and Order No. 13 of 2005). This applies offshore to 200 nautical miles.

3.2.8 Closed Waters Adjacent to GDSF: South of 26° 30.00' South Latitude

You cannot fish, have fish on board, or land fish taken under the authority of a GDSF authorisation south of 26° 30.00' south latitude (Clause 30 (3) and Part 7, GDSF Management Plan 2010).

3.3 Season dates

The GDSF season runs from 1 September to 31 August the following year (i.e. 12 months). The GDSF is not closed at any time during the season.

3.4 Capacity and Unit Value 2015/2016 licencing period

The capacity (or Total Allowable Commercial Catch – TACC) of the GDSF for the 2015/2016 licensing period is:

- 277,668 kilograms of pink snapper (whole weight); and
- 227,726 kilograms of demersal scalefish (whole weight).

The unit value of entitlement in the GDSF for the 2015/2016 licensing period is:

- Class A (pink snapper) unit of entitlement = 54 kilograms per unit; and
- Class B (demersal scalefish) unit of entitlement = 31 kilograms per unit.

3.5 How much pink snapper and/or non-pink snapper demersal scalefish quota do I hold?

All non-pink snapper demersal scalefish are now managed via an Individual Transferrable Quota entitlement system (quota). This means that there are two types of quota in the GDSF, Class A (pink snapper) units, and Class B (demersal scalefish) units.

The number of Class A (pink snapper) or Class B (demersal scalefish) quota units and the kilograms of pink snapper or demersal scalefish that can be caught under a licence are specified on the GDSF Managed Fishery Licence as current entitlement (which includes transfers of units to or from the licence). The Master of the vessel is responsible for accurately monitoring the pink snapper and demersal scalefish entitlement (quota) caught to ensure enough quota is available to cover your fishing activity at all times.

It is very important that you accurately weigh, record and add up the pink snapper and demersal scalefish quota used on your licence. You will need to ensure that you have sufficient remaining unused quota each time before you go out fishing, and during a fishing trip.

A request to the Department of Fisheries about how much pink snapper or demersal scalefish quota remaining on a GDSF Managed Fishery Licence during the season, or a catch history information request can be made by completing an *Application for the Release of Information* (Form E-1) at the Department's Carnarvon office also available on the Department's website (www.fish.wa.gov.au). The details and process to be followed in making this request are described in full on the E-1 form.

3.6 Minimum debit rule for pink snapper

Minimum debit rule for pink snapper now applies (clause 28A, GDSF Management Plan 2010).

At the conclusion of a fishing trip, the higher of either the actual amount of pink snapper landed, or the minimum debit amount of 50kg pink snapper per day (a day is defined as any 24 hour period, or part thereof, commencing at midnight) is to be deducted from quota.

For example, if a person lands 90kg of pink snapper following a two day fishing trip, 100kg of pink snapper (i.e. 2 x 50kg per day) will be deducted from quota. Whereas, if a person lands 150kg of pink snapper following a two day trip, 150kg of pink snapper will be deducted from quota. Further instructions regarding how to administer the minimum debit rule is contained in the GDSF Catch and Disposal Record form.

3.7 How many days can I fish?

There is no longer a licence condition restricting the total number of days that you are permitted to fish.

3.8 What do I do if I accidentally go over quota?

The Master of the vessel should notify the Department of Fisheries' Carnarvon Office as soon as possible if they find they have caught more pink snapper or demersal scalefish than they have quota to cover. The full process to follow if you exceed quota is described in Clause 36 of the GDSF Management Plan 2010.

3.9 Landing Fish

3.9.1 Where can I land fish?

An authorised vessel in the GDSF can only land fish at Carnarvon Harbour, Coral Bay Harbour or Denham Harbour (Clause 40 (1), GDSF Management Plan 2010). These Harbours are specifically defined in the Interpretations at Clause 3 of the GDSF Management Plan 2010.

3.9.2 Requirements when leaving the GDSF

You cannot leave the waters of the GDSF with any fish on board your vessel other than bait, for which proof of purchase can be provided (Clause 30 (3), GDSF Management Plan 2010).

If your vessel is going to leave the waters of the GDSF (for example, you have finished your quota and are travelling home to Kalbarri or Geraldton) you must first call 0457 380 480 prior to leaving the Denham, Carnarvon or Coral Bay port area and advise that your vessel is going to leave the waters of the GDSF and advise the port destination your vessel is steaming

to (Clause 25, GDSF Management Plan 2010). This will provide Fisheries and Marine Officers more time to arrange the checking of your vessel at the destination port if necessary.

3.9.3 What fish can't I land?

A list of the prohibited and/or protected species in the GDSF and a list of species that have trip limits on them are provided at Table 1 and Table 2 on pages 17 and 18.

3.9.4 What fishing gear can I use in the GDSF?

You may only line fish in the GDSF, with up to 10 lines being used for fishing at any one time (Clause 29, GDSF Management Plan 2010).

You cannot fish using wire or chain (metal) on the snood attached to the hook. This does not include the sinker, swivel, crimp or connector (Order No. 14 of 2008).

You cannot spearfish in the GDSF (Order No. 592 of 1993).

3.9.5 No transfer of fish at sea

You cannot transfer fish to or from another boat while at sea (Clause 30 (2), GDSF Management Plan 2010).

3.9.6 Filleting at sea

Filleting at sea is no longer permitted in the GDSF. All pink snapper and demersal scalefish must be landed whole or gilled and/or gutted form.

3.10 What forms do I have to fill in and submit?

3.10.1 Catch and Disposal Record

A Catch and Disposal Record with the accompanying consignment note must be filled in whenever pink snapper or demersal scalefish are landed. The Catch and Disposal Record is specifically designed to account for the pink snapper and demersal scalefish quota systems and must be filled out within four hours of landing pink snapper or demersal scalefish ashore.

Please note that all boxes including the totals box must be completed even if there is only one weight recorded. For example, if there is only whole fish landed this number has to be repeated in the corresponding totals box.

All fish must be weighed before they leave the jetty or wharf at Carnarvon Harbour, Coral Bay Harbour or Denham Harbour (for definitions of these harbours see Clause 3 of the GDSF Management Plan 2010). The forms must be delivered to the Carnarvon or Denham Fisheries Office within 72 hours of landing at Carnarvon or Denham Harbours and within 168 hours of landing at Coral Bay Harbour. Full instructions on how to fill out this form are provided at the front of the GDSF Catch and Disposal Record.

After a fishing trip in the GDSF, you must call 0457 380 480 between thirty and sixty minutes before entering the Carnarvon, Denham or Coral Bay Port Areas (Clause 37, GDSF Management Plan 2010). You need to provide an estimated weight of pink snapper and demersal scalefish. No fish are to leave the jetty or wharf unless this legislation has been complied with.

The 30 to 60-minute time frame is to provide Fisheries and Marine Officers with enough time to monitor the landing and inspect your catch. You will be provided with a consignment reference number to be recorded on the consignment note. Full instructions on how to fill out this form are provided at the front of the GDSF Catch and Disposal Record.

3.10.2 GDSF Daily/Trip Logbook

You need to fill out the GDSF Daily/Trip Logbook. This must be completed for each fishing trip and submitted to the Department by the 15th day of the following month, even when no fishing is undertaken during a month. Full instructions on how to fill out this form are provided at the front of the logbook. Any questions on this logbook can be directed to Ms Sue Turner (see contact details section of this guide).

3.11 Size limits

Minimum size limits apply to pink snapper and many demersal scalefish caught in the GDSF as in Schedule 2 of the *Fish Resources Management Regulations 1995*. The size limits are listed in the Department of Fisheries' Recreational Fishing Guide 2015, which can be obtained at the Department's Carnarvon or Denham offices or online at www.fish.wa.gov.au. The Master and deckhands aboard a GDSF vessel need to be fully aware of the minimum size limits for various species, as the Department's Fisheries and Marine Officers inspect and measure catches.

3.12 No recreational fishing from a commercial vessel

You are not allowed to recreationally fish from a commercial fishing vessel. Any fish caught or landed by a commercial vessel are deemed to be commercially caught (Section 210 of the *Fish Resources Management Act 1994*).

3.13 Prohibition on the use of bait bands

A bait band is plastic tape used for the purpose of securing cartons of bulk bait. Given concerns around these bait bands entering the marine environment, a general prohibition on having bait bands aboard fishing vessels was introduced in Western Australia in November 2011 via Regulation 55E of the *Fish Resources Management Regulations 1995*.

Accordingly bait bands may not be aboard a vessel that is used to fish in the GDSF.

3.14 Can I have friends/visitors come commercial fishing with me?

Any person that comes on a commercial fishing trip with you that assists with fishing, or is paid, must hold a Commercial Fishing Licence. If the person only observes and is not paid, they do not require a Commercial Fishing Licence.

3.15 Commercial vessel survey, moorings and berthing in the GDSF

The Department of Transport is responsible for vessel survey requirements, mooring, berthing and jetty regulations and for commercial vessel qualification matters. Contact details for the Department of Transport in Carnarvon are provided at the contacts section of this document.

Note: because Coral Bay Harbour is located in the Ningaloo Marine Park, the Department of Parks and Wildlife Exmouth Office is responsible for moorings at Coral Bay (see contacts section). Similarly, Denham Harbour is located within the Shark Bay Marine Park so the Department of Parks and Wildlife Denham Office is responsible for moorings at Shark Bay (see contacts section).

3.16 Dirk Hartog, Bernier and Dorre Islands

Dirk Hartog Island: You can go ashore on Dirk Hartog Island below the high water mark, but to access the island above the high water mark you must first apply to the Department of Parks and Wildlife Denham Office. If you anchor in Turtle Bay between November and April, please keep your lights to a minimum (no flood lights) to avoid disturbing nesting turtles and turtle hatchlings.

Bernier Island: day use only, no camping (wildlife refuge).

Dorre Island: no landing whatsoever (wildlife refuge).

3.17 What should I do if I suspect someone of fishing illegally?

If you suspect illegal fishing operations are occurring, contact *Fishwatch* on **1800 815 507** as soon as possible after you discover the event. Reports may be made anonymously and would ideally include the following:

- the date, time and location that the activity took place;
- details such as the registration numbers of the vehicle/vessels involved;
- descriptions of persons involved;
- the names of any verifying witnesses; and
- any photographs and/or other evidence.

Details of the *Fishwatch* call are sent to Fisheries and Marine Officers in the region and they will respond whenever possible. Alternatively, the Department of Fisheries' Compliance Manager of commercial finfish fisheries can be contacted at the Exmouth Office during office hours on (08) 9949 2755.

4 Vessel Monitoring System (VMS)

Important: No fish can be carried on board or landed in the Gascoyne Demersal Scalefish Managed Fishery unless a nomination of fishing is first made.

To use an authorised boat in the GDSF, an approved Automatic Location Communicator must be installed and operated in accordance with the GDSF Approved Directions (Clause 23, GDSF Management Plan 2010; Regulation 55, *Fish Resources Management Regulations 1995*).

The GDSF Approved Directions contains the procedures and guidelines to have an approved Automatic Location Communicator properly installed, tested and maintained for the GDSF. It also lists Automatic Location Communicator breakdown procedures and how to make the required nomination in the GDSF. Contact the Carnarvon Office or VMS staff for a copy of this document (see contacts section).

4.1 Nomination

The nomination that is required via the Automatic Location Communicator in the GDSF is described in detail at Clause 24 of the GDSF Management Plan 2010 and on page 20 of the GDSF Approved Directions. The nomination must be received by the Department to be in effect – it is not good enough to just send the nomination without also having being sent back an “easymail” reference number via the Automatic Location Communicator. A copy of this reference number should be recorded and kept as proof of sending the nomination.

Nomination of fishing. **It is an offence to fish or to have any pink snapper or demersal scalefish on board your vessel in the GDSF without having first made this nomination.** This nomination advises that the authorised vessel is going on a fishing trip for pink snapper and/or demersal scalefish in the GDSF. The nomination must be made two hours or less before leaving port on every fishing trip for pink snapper or demersal scalefish in the GDSF. The nomination can be made only from the Carnarvon, Denham or Coral Bay Port Area or within one hour of entering the waters of the GDSF (that is, if the vessel intends to fish on the way into Carnarvon, Denham or Coral Bay Port Areas). The nomination applies for the whole period the vessel is at sea until it returns to port (see below).

Generally, if a delivery notification is not received within 20 minutes, then the message has failed. The Master should try to send the notification again. Where the messaging facility of the approved Automatic Location Communicator is still not operating and the Master is unable to transmit the mandatory nomination to fish, the VMS Unit (08 9432 8008) is to be called and the details of the nomination left as a voice message along with the Master's name and contact number, see the GDSF Approved Directions for further details.

Note this phone call is a temporary option and the computer is to be repaired as soon as practically possible.

When nominating to fish, you must now nominate the MFL that you will be fishing under. If you wish to fish under a new MFL whilst at sea, a subsequent at sea nomination can be made to specify the new MFL.

To set up your EasyMail to reflect the changes to nominate the MFL you will be fishing under, please refer to the Department's EasyMail guide. A copy of the EasyMail guide for the version that you have can be requested by contacting VMS (contact details at the back of this guide).

5 Prohibited/Protected Species

The species in the table below cannot be taken as they are protected under WA legislation and/or Commonwealth legislation. (Page 4 of the GDSF Managed Fishery Daily/Trip Logbook details how to report any interactions with, or injuries to, species protected under Commonwealth legislation).

Table 1 Prohibited and/or Protected Species in the Gascoyne Demersal Scalefish Managed Fishery

Common name	Scientific Name	Limits
All sharks, rays and sawfish		
Billfish (marlins, swordfish, spearfish and sailfish)	Family <i>Istiophoridae</i>	
Mackerel (includes Spanish, broad bar, school etc)	<i>Scomberomorus</i> spp.	
Potato cod	<i>Epinephelus tukula</i>	
Queensland groper	<i>Epinephelus lanceolatus</i>	These species cannot be taken
Humphead Maori wrasse	<i>Cheilinus undulates</i>	
Seabirds, sea turtles, dugongs, sea snakes, great white sharks, pipefishes, seals, whales and dolphins		
All crustaceans, corals, live rock and molluscs (except squid, octopus and cuttlefish)		

6 Bycatch Limits

Table 2 Bycatch Limits for Commonwealth Managed Species

Common name	Scientific Name	Restrictions
Yellowfin Tuna	<i>Thunnus albacares</i>	2 fish per trip in total (any combination)
Bigeye Tuna	<i>Thunnus obesus</i>	
Albacore Tuna	<i>Thunnus alalunga</i>	10 fish per trip in total (any combination)
Blue Mackerel	<i>Scomber australasicus</i>	
Jack Mackerel	<i>Trachurus declivis</i>	
Longtail Tuna	<i>Thunnus tonggol</i>	
Peruvian Jack Mackerel	<i>Trachurus murphi</i>	
Pomfrets, fanfish	Family <i>Bramidae</i>	
Redbait	<i>Emmelichthys nitidus</i>	
Skipjack Tuna	<i>Katsuwonus pelamis</i>	
Yellowtail Jack Mackerel	<i>Trachurus novaezelandiae</i>	
Northern Bluefin Tuna	<i>Thunnus thynnus</i>	
Southern Bluefin Tuna	<i>Thunnus maccoyii</i>	

Attachment 1 GDSF Contact Details (as at November 2015)

Management enquiries Hannah Zilles Regional Fisheries Management Officer, Gascoyne (Head Office)	Hannah.Zilles@fish.wa.gov.au	(08) 9482 7313
VMS enquiries	VMS@fish.wa.gov.au	(08) 9432 8000 (08) 9432 8008
Licensing enquiries Mr Tristan Lowe	Tristan.Lowe@fish.wa.gov.au	(08) 9482 7302
Compliance enquiries	Compliance Manager Graeme Meinema	(08) 9949 2755
Suspected illegal fishing activity	Fishwatch	1800 815 507
Catch and Disposal Record enquiries via E1 form Customer Service Officer - Carnarvon	Gascoyne.admin@fish.wa.gov.au	(08) 9941 1185
Daily Logbook enquiries Ms Sue Turner	Sue.Turner@fish.wa.gov.au	(08) 9203 0140
Commonwealth Protected Species interactions		1800 641 806
Department of Fisheries, Carnarvon Office	59 Olivia Terrace Carnarvon WA 6701	Ph:(08) 9941 1185
	PO Box 774 WA 6701	Fax:(08) 9941 1951
Department of Fisheries, Denham Office	Knight Terrace Denham WA 6537	Ph:(08) 9948 1210 Fax:(08) 9948 1154
Vessel survey requirements, marine safety etc. Carnarvon moorings. Department of Transport, Carnarvon	Small Boat Harbour, Carnarvon WA 6701	Ph:(08) 9941 1830 Fax:(08) 9941 1067
Moorings Coral Bay Department of Parks and Wildlife, Exmouth	22 Nimitz Street (PO Box 201) Exmouth WA 6707	(08) 9947 8000
Moorings Denham Department of Parks and Wildlife, Denham	Knight Terrace, Denham WA 6537	(08) 9948 1208

Attachment 2 GDSF Internet links for relevant documents

Online WA Fisheries Legislation

<http://www.fish.wa.gov.au/About-Us/Legislation/Pages/default.aspx>

Online Commercial Licensing Forms

<http://www.fish.wa.gov.au/Fishing-and-Aquaculture/Commercial-Fishing/Commercial-Fishing-Licences/Pages/Commercial-Licence-Forms.aspx>

Department of Transport (moorings, marine safety, navigation aids etc.)

http://www.transport.wa.gov.au/imate/marine/marine_information.asp