



Aquaculture Zones Project

Newsletter # 6
August 2014

IN THIS ISSUE

Declaration of the
Kimberley Zone

About the
Aquaculture
Kimberley Zone

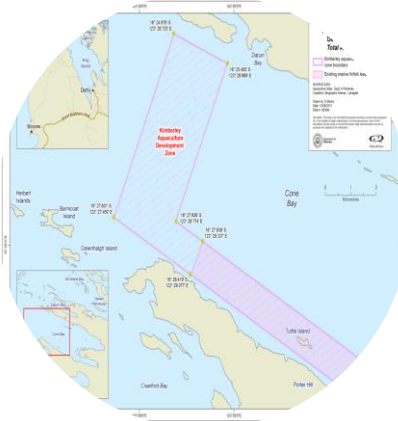
Management of
Aquaculture Inside
the Zone

Register
your
interest in the
Aquaculture
Kimberley Zone

What's next?

For more information visit
www.fish.wa.gov.au

Declaration of the Kimberley Aquaculture Development Zone



The Minister for Fisheries has officially declared the Kimberley Aquaculture Development Zone in **WA's northern waters**. The Minister for Fisheries has made this declaration with the concurrence of the Minister for Lands and consulting with the Minister for Environment.

Covering a total area of almost **2,000 hectares**, the zone is located within Cone Bay approximately 215 kilometres northeast of Broome. Extensive environmental studies completed for the zone indicate its capacity to support **20,000 tonnes of finfish** without any significant environmental impact.

About the Kimberley Aquaculture Zone

Designating areas as aquaculture zones provides an **'investment ready' platform** for organisations planning to set up large-scale commercial aquaculture operations. The zones have strategic **environmental approvals** and will have management policies in place, so operations can be started without the need for lengthy and expensive approval processes.

The Kimberley Aquaculture Zone will help maintain the **protection of environmental and cultural values** in the region. Establishing new aquaculture operations, or expanding existing ones, will provide significant economic benefits to the local community through **job opportunities** and regional economic diversification. The strategic approach taken to establish the Kimberley Aquaculture Zone allows the consideration of cumulative environmental impacts, rather than assessing impacts on a case-by-case basis as applications are received or expansion occurs. The extensive studies and modelling that were undertaken will ensure the potential effects of large-scale aquaculture are identified and well understood, so they can be effectively managed under an integrated management framework.

An **existing barramundi farm** operates within the boundaries of the Kimberley Aquaculture Development Zone. The establishment of the zone has enabled the operator, Marine Produce Australia Pty Ltd, to secure environmental approval to increase its production capability from 2,000 to nearly 7,000 tonnes per annum.



Management of Aquaculture inside the Zone

The Department is developing two policies to manage aquaculture inside the zone.

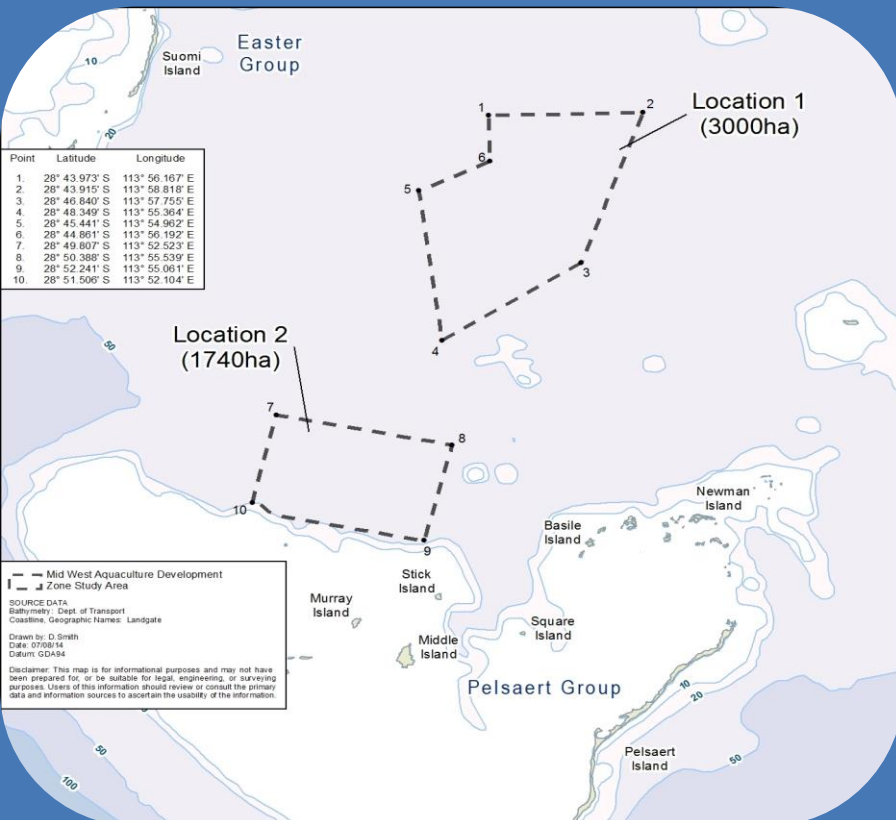
The Department will have in place a **Management Policy** to guide the ecologically sustainable development of marine finfish aquaculture through streamlined assessment and planning processes and to provide a feedback mechanism to continuously improve the efficiency of monitoring and management activities.

The Department is working on a **Site Allocation Policy** for the zone. The Policy will guide the Department in the decision making process for allocating sites within the Zone. The Policy will encompass a fair and equitable process, taking into consideration level of interest, efficient zone use and lease sizes.



Register your Interest

You can register your interest in the Kimberley Aquaculture Development Zone by emailing aquaculture@fish.wa.gov.au



What's next? Mid West Aquaculture Development Zone

Carefully planned **environmental field work** has begun to describe the state of the study area's marine environment, including any coral habitats and sensitive species of fauna and flora. The data will be used for **technical studies** to assess the environment's carrying capacity for **ecologically sustainable finfish aquaculture**.

Communications Schedule and Opportunities for Comment

- Early 2015
Project update
- Late-2015
Results of technical studies
- Boundaries of the proposed MWADZ
- Early 2016
Public Environmental Review (formal comment period)
- Draft Zones Management Policy
- Late 2016
Launch of the Zone and Management Policy

Study Area for the Mid West Aquaculture Development Zone

The Department will survey and sample the study area of 4,740 hectares with the aim of identifying 2,200 hectares in Location 1 and 800 hectares in location 2 as the most suitable areas for finfish aquaculture. Technical environmental studies of these locations will determine the exact site for the zone.